

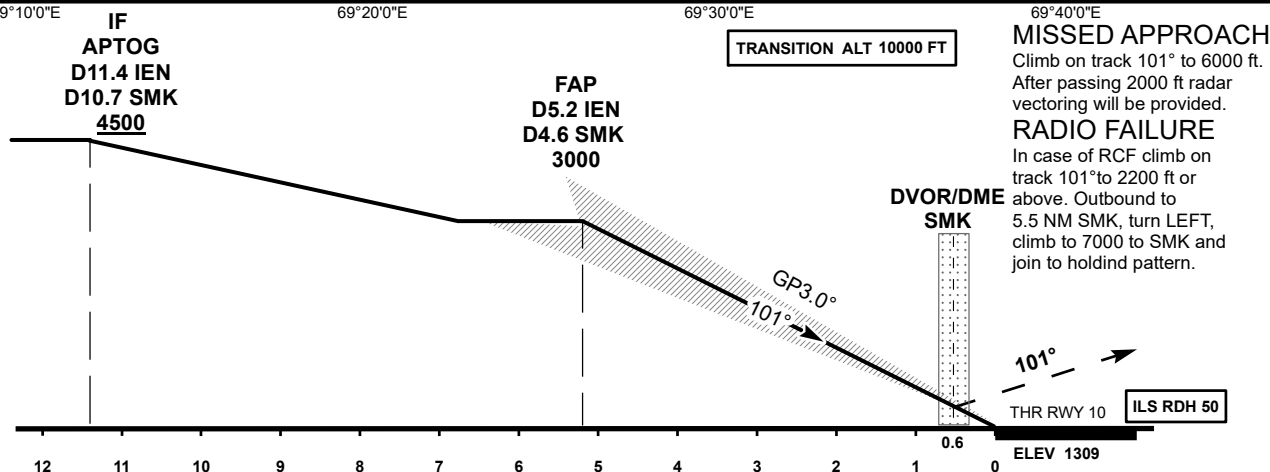
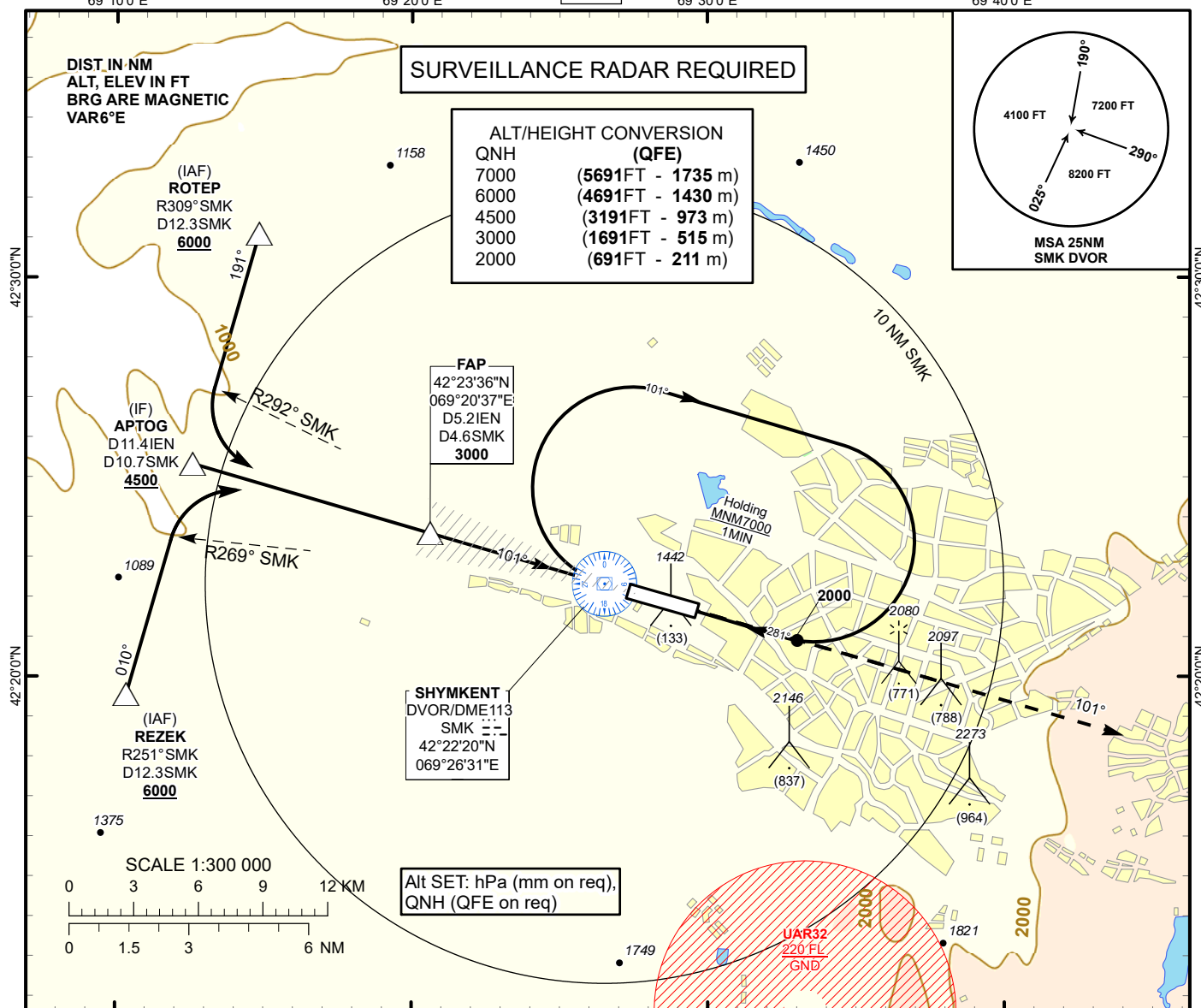
INSTRUMENT
APPROACH
CHART - ICAO

AERODROME ELEV 1387FT
HEIGHTS RELATED TO
THR RWY10 - ELEV 1309FT

ILS
LLZ 111.7
IEN
GP 333.5
CH 54X

SHYMKENT TOWER 125.9
SHYMKENT ATIS (EN) 119.2
SHYMKENT ATIS (RU) 126.6

SHYMKENT
ILS/DME
RWY 10



MISSSED APPROACH
Climb on track 101° to 6000 ft.
After passing 2000 ft radar
vectoring will be provided.

RADIO FAILURE
In case of RCF climb on
track 101° to 2200 ft or
above. Outbound to
5.5 NM SMK, turn LEFT,
climb to 7000 to SMK and
join to holding pattern.

Aircraft Category		A	B	C	D	DIST to THR DME IEN	NM	5.2	4	3	2	1	
Straight-in Approach OCA/H						DME SMK	NM	4.5	3.3	2.3	1.3	0.3	
	CAT I	1509(200)	1516(207)	1526(217)	1536(227)	ALTITUDE	FT	3000	2646	2322	1999	1678	
						HEIGHT	FT	(1691)	(1337)	(1013)	(690)	(369)	
DME IEN ZERO RANGED TO THR RWY 10													
Aerodrome Operating Minima DH ft x RVR (CMV)	CAT I												
						GS	Kt	80	100	120	140	160	180
						Desc. Rate(5.2%)	ft/min	420	530	630	740	840	950

SHYMKENT
ILS/DME

AERONAUTICAL DATA TABULATION

ILS approach to RWY10 from APTOG, ROTEP, REZEK	
Fix/point	Coordinates
DVOR/DME SMK	42° 22' 20.4"N 069° 26' 30.6"E
(FAP) D5.2 IEN, D4.6 SMK	42° 23' 36.3"N 069° 20' 36.9"E
APTOG (IF) D11.4 IEN, D10.7 SMK	42° 25' 19.5"N 069° 12' 34.9"E
ROTEP (IAF) R309°, D12.3 SMK	42° 31' 05.6"N 069° 14' 49.4"E
REZEK (IAF) R251°, D12.3 SMK	42° 19' 33.4"N 069° 10' 20.7"E
THR RWY 10	42° 22' 09.24"N 069° 27' 22.27"E
IEN LOC	42° 21' 34.2"N 069° 30' 04.8"E